

# OSUCCC – James 19<sup>th</sup> Annual Scientific Meeting

[cancer.osu.edu/2018ASM](http://cancer.osu.edu/2018ASM)

## AGENDA

*Location: Archie M. Griffin Grand Ballroom, Ohio Union*

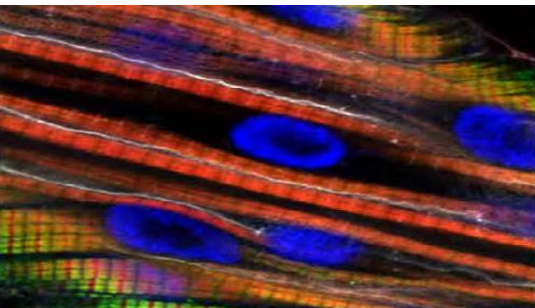
- 7 a.m.      **Registration and Continental Breakfast**  
Session #1 posters need to be up by 8 a.m.
- 8 a.m.      **Welcome and Cancer Center Update**  
**Raphael Pollock, MD, PhD**  
Director, The Ohio State University Comprehensive Cancer Center (OSUCCC)

## Session One

- 8:15 a.m.      **ORIEN**  
**Matthew Ringel, MD**  
Program Leader, Molecular Biology and Cancer Genetics  
Director, Division of Endocrinology, Diabetes and Metabolism  
Co-Director, Thyroid Cancer Unit  
Professor of Medicine  
OSUCCC – James
- 8:35 a.m.      **ORIEN**  
**William S. Dalton, PhD, MD**  
Executive Chair  
M2Gen
- LEUKEMIA RESEARCH**
- 9:10 a.m.      **Epigenetic Therapy**  
**Jean-Pierre Issa, MD**  
Director, Fels Institute for Cancer Research and Molecular Biology  
Professor of Medicine  
Lewis Katz School of Medicine  
Temple University

The James





## AGENDA

*Location: Archie M. Griffin Grand Ballroom, Ohio Union*

### Session One (Continued)

- 9:45 a.m. **Mutations in EGR2 Direct Aberrant Epigenetic Programming in Chronic Lymphocytic Leukemia**  
**Christopher Oakes, PhD**  
Assistant Professor of Medicine  
Department of Internal Medicine  
OSUCCC – James
- 10:05 a.m. **Poster Session #1:**  
*Leukemia Research, Translational Therapeutics and Shared Resources*  
**Mid-Morning Break**
- 11:20 a.m. **10 Minute Poster Transition Time**  
Session #1 Posters Come Down (Shared Resources stay in place all day)  
Session #2 Posters Go Up

### TRANSLATIONAL THERAPEUTICS

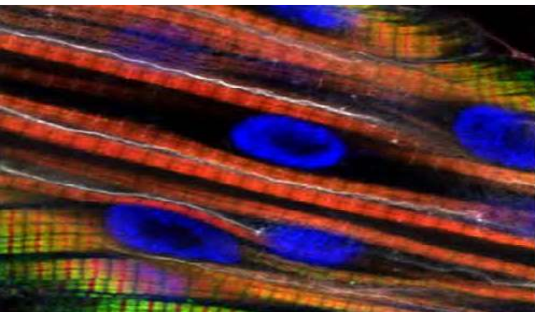
- 11:30 a.m. **Tumor Metabolism, From Sugar to Lipids**  
**Deliang Guo, PhD**  
Associate Professor  
Department of Radiation Oncology  
OSUCCC – James
- 11:50 a.m. **Novel Therapeutic Strategies in SCLC**  
**Ravi Salgia, MD, PhD**  
Associate Director for Clinical Sciences Research  
Professor and Chair, Department of Medical Oncology & Therapeutics Research  
City of Hope Comprehensive Cancer Center

The James



THE OHIO STATE UNIVERSITY  
COMPREHENSIVE CANCER CENTER





# OSUCCC – James 19<sup>th</sup> Annual Scientific Meeting

[cancer.osu.edu/2018ASM](http://cancer.osu.edu/2018ASM)

## AGENDA

*Location: Archie M. Griffin Grand Ballroom, Ohio Union*

12:20 p.m. **Lunch**  
**Poster Session #2:**  
*Cancer Control, Molecular Biology and Cancer Genetics, Molecular Carcinogenesis and Chemoprevention, and Shared Resources*

## Session Two

### CANCER CONTROL

2:00 p.m. **Anti-inflammatory Agents and Endometrial Cancer**  
**Theodore Brasky, PhD**  
Research Assistant Professor  
Division of Cancer Prevention and Control  
Department of Internal Medicine  
OSUCCC – James

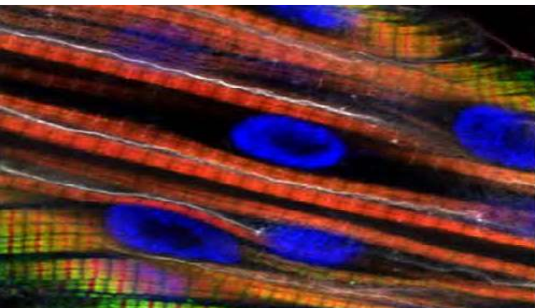
2:20 p.m. **Glioma: Insights From Molecular Epidemiology to Functional Validation of Glioma Genes**  
**Melissa L. Bondy, PhD, MS**  
Professor, Department of Medicine  
Associate Director of Cancer Prevention and Population Sciences  
McNair Scholar  
Baylor College of Medicine

### MOLECULAR BIOLOGY AND CANCER GENETICS

2:55 p.m. **The Role of T-Cell Aging in Immunotherapeutic Efficacy**  
**Christin Burd, PhD**  
Assistant Professor  
Departments of Molecular Genetics, and Molecular and Cellular Biochemistry  
OSUCCC – James

The James





## AGENDA

*Location: Archie M. Griffin Grand Ballroom, Ohio Union*

### Session Two (Continued)

#### MOLECULAR BIOLOGY AND CANCER GENETICS (Continued)

- 3:15 p.m. **Akt, RNA Splicing and Cancer: Ongoing Studies and Updates**  
**Philip Tsichlis, MD**  
Executive Director, Molecular Oncology Research Institute  
Professor, Tufts University School of Medicine

#### MOLECULAR CARCINOGENESIS AND CHEMOPREVENTION

- 3:50 p.m. **Effective Interventions for Metabolic Syndrome and Complications in Cancer Survivors**  
**Colleen Spees, PhD, MEd, RDN, LD, FAND**  
Assistant Professor  
Division of Medical Dietetics and Health Sciences  
OSUCCC – James
- 4:10 p.m. **TET1 is a P53-Suppressed Oncogene in Lung Cancer That Prevents Cellular Aging and a Target for Enhancing Therapy-Induced Senescence**  
**Steven Belinsky, PhD**  
Vice President for Academic Research  
Director, Lung Cancer Program  
Lovelace Respiratory Research Institute
- 4:45 p.m. **Awards Presentation and Closing Remarks**  
**Raphael Pollock, MD, PhD**
- 5:05 p.m. **Closing Reception**
- 6:15 p.m. **Adjourn**

The James



THE OHIO STATE UNIVERSITY  
COMPREHENSIVE CANCER CENTER

